

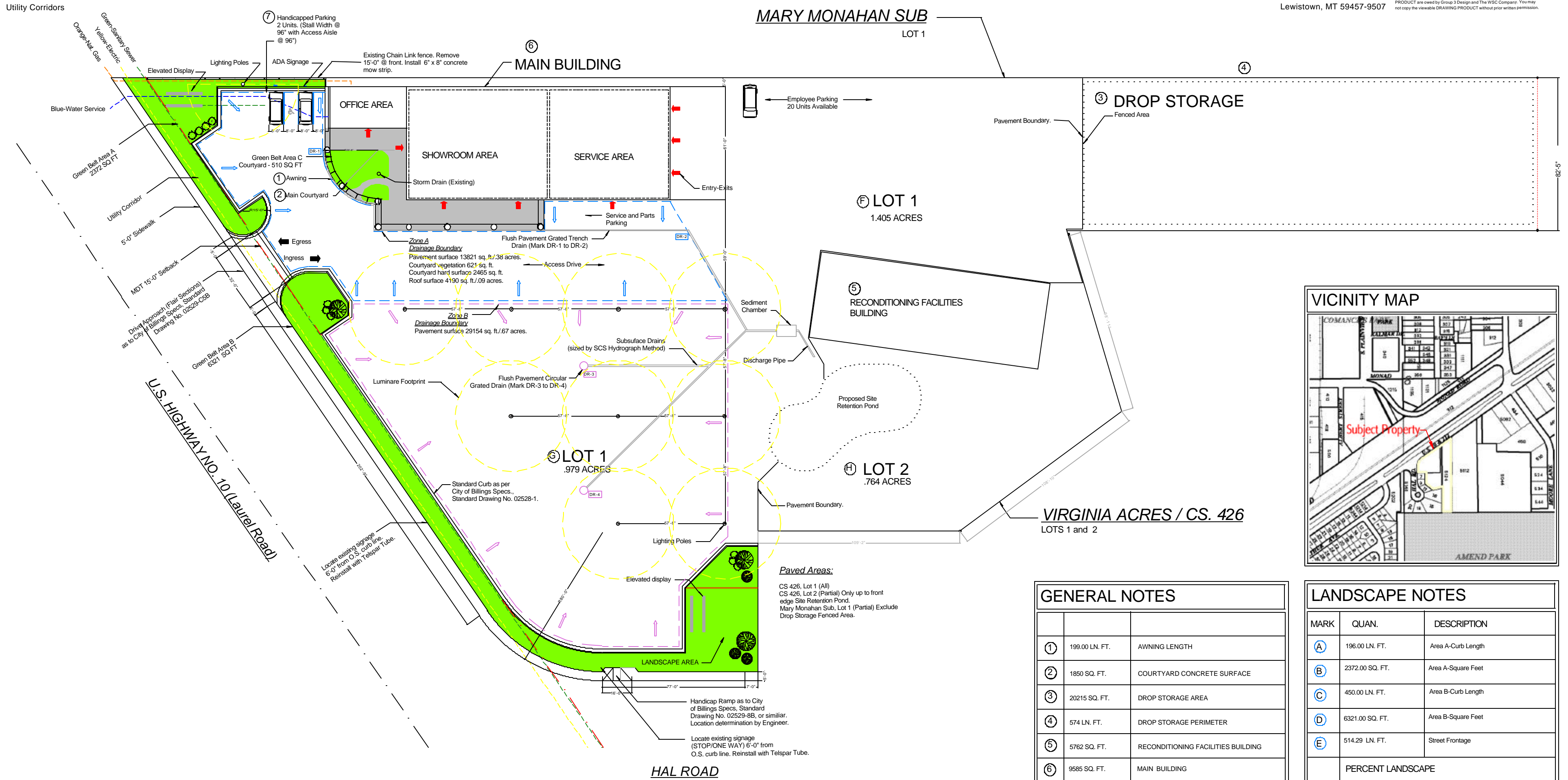
Landscape and Lighting Plan

1.0

tel: 1.406.538.6858 email: kbruski@mcn.net
05.29.2001 Copyright Group 3 Design & The WSC Company

PERMISSION TO REPRODUCE
IMPORTANT: This drawing is based on copyrighted information. All work shown on this drawing is copyrighted by Group 3 Design and The WSC Company. All rights, title and copyrights in and to this DRAWING PRODUCT including any images, photographs, animations, video, audio, music, text and graphics incorporated into the DRAWING PRODUCT and any copies of the DRAWING PRODUCT are owned by Group 3 Design and The WSC Company. You may not copy the viewable DRAWING PRODUCT without prior written permission.

Group 3 Design
RR 3 Box 3073A
Lewistown, MT 59457-9507



GENERAL NOTES		
①	199.00 LN. FT.	AWNING LENGTH
②	1850 SQ. FT.	COURTYARD CONCRETE SURFACE
③	20215 SQ. FT.	DROP STORAGE AREA
④	574 LN. FT.	DROP STORAGE PERIMETER
⑤	5762 SQ. FT.	RECONDITIONING FACILITIES BUILDING
⑥	9585 SQ. FT.	MAIN BUILDING
⑦	747 SQ. FT.	2 UNIT HANDICAP PARKING AREA

LANDSCAPE NOTES		
MARK	QUAN.	DESCRIPTION
A	196.00 LN. FT.	Area A-Curb Length
B	2372.00 SQ. FT.	Area A-Square Feet
C	450.00 LN. FT.	Area B-Curb Length
D	6321.00 SQ. FT.	Area B-Square Feet
E	514.29 LN. FT.	Street Frontage
PERCENT LANDSCAPE		
F	4.85 %	Mary Monahan Sub, LOT 2 - 61,201 SQ. FT.
G	18.90 %	CS. 426, LOT 1 - 33,279 SQ. FT.
H	0.00 %	CS. 426, LOT 2 - 42,645 SQ. FT.

AUTOMALL USA-ISUZU

LEGAL
5124 LAUREL RD
YELLOWSTONE COUNTY, MONTANA
MARY MONAHAN SUB, Lot 1 and CS 426, Lot 1 & Lot 2

OWNER
AUTOMALL USA-ISUZU
1738 KING AVE
BILLINGS, MONTANA 59101

SCALE: 1"=50'

No. MLP 1.00